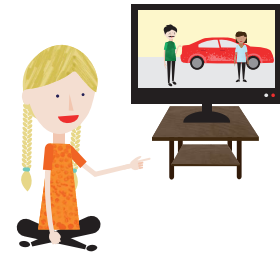


Subtracting without Renaming

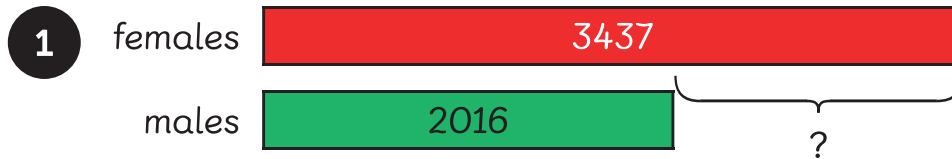
In Focus

In a popular reality television competition, there were 3437 female contestants and 2016 male contestants.

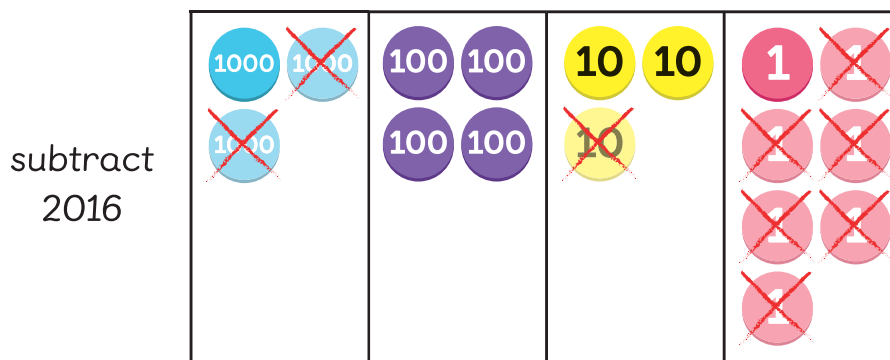
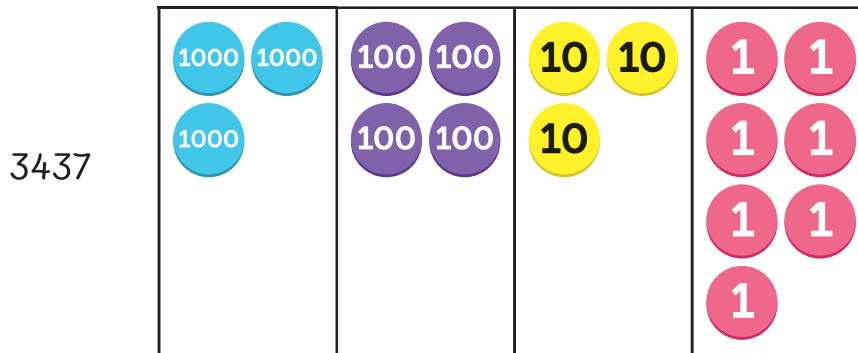
How many more female contestants than male contestants were there?



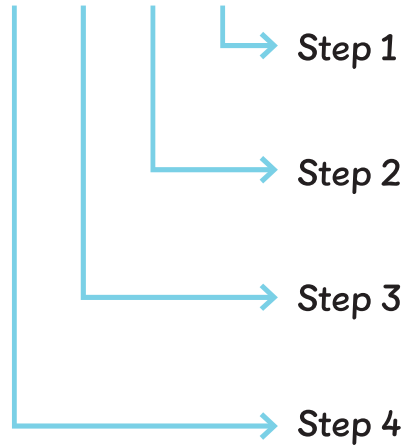
Let's Learn



$3437 - 2016 =$



$$\begin{array}{r}
 3 \ 4 \ 3 \ 7 \\
 - 2 \ 0 \ 1 \ 6 \\
 \hline
 1 \ 4 \ 2 \ 1
 \end{array}$$



Subtract the ones.

$$7 \text{ ones} - 6 \text{ ones} = 1 \text{ one}$$

Subtract the tens.

$$3 \text{ tens} - 1 \text{ ten} = 2 \text{ tens}$$

Subtract the hundreds.

$$4 \text{ hundreds} - 0 \text{ hundreds} = 4 \text{ hundreds}$$

Subtract the thousands.

$$3 \text{ thousands} - 2 \text{ thousands} = 1 \text{ thousand}$$

$$3437 - 2016 = 1421$$

$$\begin{array}{r}
 1 \ 4 \ 2 \ 1 \\
 + 2 \ 0 \ 1 \ 6 \\
 \hline
 3 \ 4 \ 3 \ 7
 \end{array}$$



Guided Practice

Use number discs to help you subtract.

1 $5159 - 43 =$

2 $3215 - 104 =$

3 $9876 - 7531 =$

4 $6274 - 5031 =$